

Product sheet

CPM

Communication Platform

FEATURES

- Local display and console for basic configuration and operation of the transmitter
- Connection point between the transmitter and the DCS (Distributed Control System)
- Protected from splash and sun

BENEFITS

- Large illuminated display for easy reading
- Provides full setting of the transmitter
- Device Description (DD) and DTM enables communication with Universal HART handheld terminals and/or general PC-based software



GENERAL / BACKGROUND

The CPM Communication Platform is delivered as a complete unit from BTG, normally in conjunction with a transmitter.

The CPM ensures capability with present and future communication interface requirements, from analogue output with HART® to field buses.



Use QR-code or link for more information
www.btg.com/mybtg/en/instruments/cpm

TECHNICAL DATA / SPECIFICATIONS

GENERAL

Type	CPM, Communication Platform
Manufacturer	BTG Instruments AB, Säfte Sweden
Communication Modules:	The CPM is equipped with a module for HART® or Fieldbus communication. Equipped with slot for SD memory card.
HART® communication	
Output signal, analog	4-20 mA. Galvanically isolated. Current limited to min. 3.9 and max. 20.5 mA. Loop load signal: Voltage supply/load 24 V DC. Active output as an option
Output signal, digital	Superimposed signal over 4-20 mA current loop according to standard HART® protocol.
Fieldbus communication	
Output/Input signal	PROFIBUS (PA)
User Interface	Illuminated display. Key pad for adjustment of transmitter settings.
Serial port	RS485
Supply Voltage	Power supply unit 100-240 V AC, 50/60 Hz
Power Consumption	Maximum: 50 VA (CPM-1300) 320 VA (CPM-1400)
Materials:	
Electronics console	Polycarbonate thermo plastic

Cable fittings	Polyamide thermo plastic
Electronics box	Painted aluminum

Storage Temperature	Max. 80 °C [176 °F]
Operation Temperature	Min. -25 °C [-13 °F]
Temperature	Max. 50 °C [122 °F]
Degree of Protection	Min. 0 °C [32 °F]
Weight	IP 65, comparable to NEMA 4x and better 2 - 2.5 kg [4.4 - 5.5 lbs] depending on configuration

Cables

Power supply cable	Flexible 0.3 - 2.5 mm ² [AWG = 28-12]
Signal cable	0.2 - 2.5 mm ² [AWG = 24-12]
Transmitter Cable	Standard length 10 m (CPM-1300 option, up to 55 m)
Cable Inlets	There are cable glands for signaling cables (diameter 4-8 mm) and for power supply cable (diameter 4-12 mm) in the bottom of the CPM.

SAFETY & DIRECTIVES

Safety and protection class

Product safety	CE, C-tick
----------------	------------

EU-directives

Designed in accordance with relevant CE standards.

Quality Assurance

Quality-assured in accordance with ISO 9001.

YOUR LOCAL BTG OFFICE



Use QR-code or link for more information
www.btg.com/en/contact/sales-service-network

DIMENSION DRAWINGS

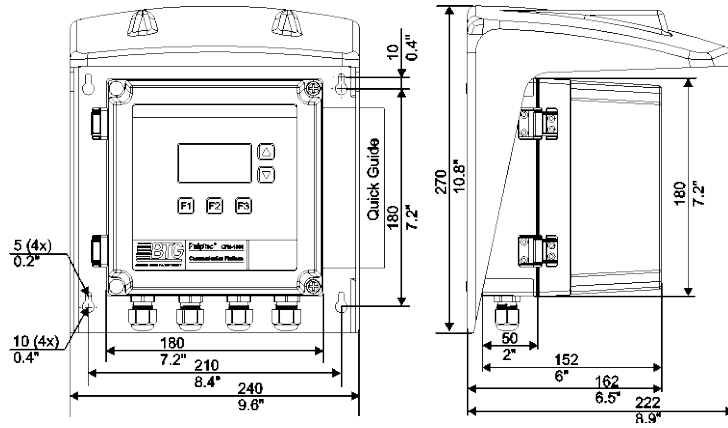


Figure 1: CPM Dimensions

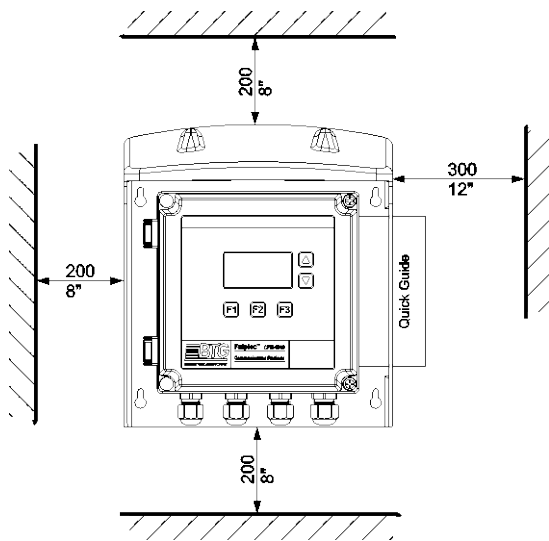


Figure 2: CPM Recommended clearance